



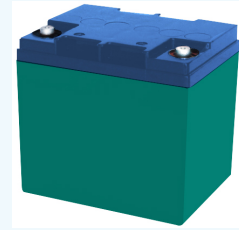
**VISION GROUP**  
Shenzhen Center Power  
Tech.Co.Ltd.,

# HFS12-115W-X

12V 26Ah

## Overview

The new VISION HFS series batteries are designed for UPS Standby Power Applications requiring high power output. Computer designed grids and optimized plate paste formula produce high energy density and long lasting uninterrupted power for critical systems.



## Battery Construction

Component	Positive plate	Negative plate	Container	Cover	Safety valve	Terminal	Separator	Electrolyte
Raw material	Lead dioxide	Lead	ABS	ABS	Rubber	Copper	Fiberglass	Sulfuric acid

## General Features

- Positive and negative plates in lead-calcium-tin alloy;
- Superior energy density;
- Operate at a low internal pressure;
- Gas recombination;
- Special separator technology;
- A recognized component of UL, IEC, TLC. etc;
- Flame retardant ABS(UL 94-FV0);
- Very high power output for 5 to 15 minutes supply
- A covered range from 90W to 850W per cell for 15min @ 1.67Vpc;
- Six months shelf life at 20 °C;
- Design life :12+ years at 20 °C;
- Recommended loading 1h and below;

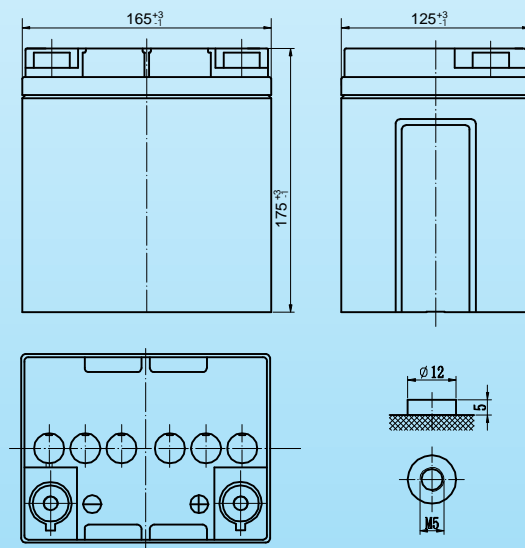
## Battery Specification

Performance Characteristics	
Nominal Voltage	12V
Number of cell	6
Design Life	12 years
Nominal Capacity 77°F(25°C)	
15 min wattage @ 1.67VPC	115W/cell
10 hour rate (2.60A,10.8V )	26 Ah
20 hour rate (1.40A,10.8V )	28 Ah
Internal Resistance	
Fully Charged battery 77°F(25°C)	≤8.0 mOhms
Self-Discharge	
3% of capacity declined per month at 20°C(average)	
Operating Temperature Range	
Discharge	-20~60°C
Charge	-10~60°C
Storage	-20~60°C
Max. Discharge Current 77°F(25°C)	260A(5s)
Charge Methods: Constant Voltage Charge 77°F(25°C)	
Cycle use	2.40~2.45VPC
Maximum charging current	8.4A
Temperature compensation	-30mV/°C
Standby use	2.23~2.30VPC
Temperature compensation	-20mV/°C

## Dimensions and Weight

Length(mm / inch)	165/6.5
Width(mm / inch)	125/4.92
Height(mm / inch)	175/6.89
Total Height(mm / inch)	175/6.89
Approx. Weight(Kg / lbs)	9.6/21.2

\* Weight deviation: ± 5%



## Discharge Constant Current (Amperes at 77°F25°C)

End Voltage Volts/Cell	3min	5min	10min	15min	20min	25min	30min	45min	60min
1.60	168	131	90.2	67.3	56.1	48.1	42.1	31.1	24.7
1.65	158	125	86.2	64.8	54.0	46.3	40.7	30.0	23.9
1.67	154	123	84.6	63.8	53.2	45.6	40.2	29.5	23.5
1.70	148	116	78.5	60.3	50.3	43.1	38.3	28.0	22.5
1.75	139	108	74.2	56.8	47.5	40.1	35.1	26.6	21.3
1.80	127	103	71.1	54.8	45.6	39.4	35.0	25.7	20.8

## Discharge Constant Power (Watts at 77°F25°C)

End Point Volts/Cell	3min	5min	10min	15min	20min	25min	30min	45min	60min
1.60	325	240	157	118	99	85.8	75.2	56.6	45.7
1.65	311	233	153	116	97	83.8	73.4	55.4	44.8
1.67	306	230	152	115	96	83.0	72.7	54.9	44.4
1.70	283	221	147	110	92	80.1	70.3	53.2	43.2
1.75	267	210	140	106	90	77.3	67.8	51.5	41.9
1.80	253	200	134	102	85	74.6	65.4	49.8	40.6

(Note)The above characteristics data are average values obtained within three charge/discharge cycles not the minimum values.All data shall be changed without notice,Vision reserves the right to explain and update the information contained hereinto.



**VISION GROUP**  
Shenzhen Center Power  
Tech.Co.Ltd.,

# HFS12-115W-X

## 12V 26Ah

